

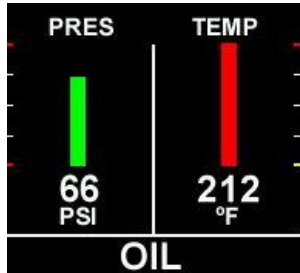
# OPT200XX Operations Guide

---

This manual outlines the operating procedures for all OPT200XX series products

---

## 1. Power Up / Default Screen



Displays the oil pressure and temperature. Colors are determined by the range values as set during installation.

Press the top button once to move to the next display screen (#2 if the part number contains a "V" suffix **OR** #3 if not).

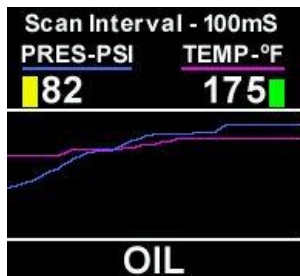
## 2. Voltmeter Display



Displays the battery voltage on the top half of the display and the oil pressure and temperature on the bottom half.

Press the top button to move to the next display.

## 3. Trend Graph



This screen displays the oil pressure and temperature graphically.

Pressure and temperature information is displayed with a miniature version of the bars as on the default screen and the actual value.

They are also displayed graphically.

The "Scan Interval" can be changed by pressing the bottom button.

To freeze the display, press the top button **ONCE**.

To continue displaying information in this mode, press the bottom button **ONCE**, **OR**, to return to the default screen, press the top button once.

# OPT200XX Operations Guide

---

## 4. Other Options

To display the instrument serial number and core information press and hold the bottom button when in the default screen.

### **WARNING**

*All engine operations are to be performed in accordance with the specific instructions pertaining to your aircraft, including those provided by the engine manufacturer. The OPT200XX series instruments are only parameter reporting devices which can assist in engine management when used in conjunction with these instructions.*

*All OPT200XX products are certified as primary replacements, or for secondary use as desired.*